

# J Birds

by John Fedchock

1st Trombone

Medium - Up Swing ♩ = 192

SOLI W/TBN. 2

7

1 8

9 10 11 12

13 14 15 16

17 18 19 20

21 22 23 24

25 26 27 28

29 30 31 32

33 34 35 6

41 49 57 8

65 73 6 2 2

83 91 99 8

SOLO

D7

G7(b9)

107



C7

F7



115

Bb7

G7

CM17

F7

DM17

G7

CM17

F7



Bb7

Bb7ALT

Eb7

E0

Bb7

C7ALT

F#7

F7ALT



123

Bb7

G7

CM17

F7

DM17

G7

CM17

F7



Bb7

Eb7

E0

Bb/F

G7

CM1

F7



131

Bb7

G7

CM17

F7

DM17

G7

CM17

F7



Bb7

Eb7

E0

Bb



139

D7

G7



C7

F7



147  $Bb7$   $G7$   $CM17$   $F7$   $DM17$   $G7$   $CM17$   $F7$



147 148 149 150

$Bb7$   $Eb7$   $E^0$   $C7(\#11)$   $F7ALT$   $Bb7(\#11)$   $Gb7$   $F7ALT$



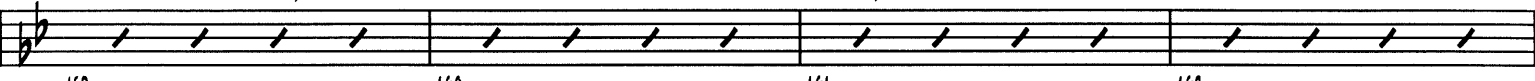
151 152 153 154

155  $F7ALT$   $Gb13(\#11)$   $F7ALT$   $Eb7ALT$



155 156 157 158

$D7(\#9)$   $Db7(\#9)$   $C7(\#9)$   $F7ALT$   $Bb7$   $G7ALT$   $C7ALT$   $F7ALT$




159 160 161 162

163  $BbMA7$  7 171 4



163 164 171 172

$Bb7(\#9)$   $Eb7$   $E^0$   $Bb7$   $F7$   $Eb7(\#9)$



175 176 177 178

179 END SOLO 7 187 8



179 180 187 188

195 OPEN  
TRADE 4'S W/TBN 2 - TACET 1ST X


$CM17$   $F7$   $DM17$   $G7$



195 196 197 198

199 ON CUE  
8 X'S

$CM17$   $F7$   $DM17$   $G7$



199 200 201 202

203  $CM17$  2  $EbMA7(\#11)$



203 204 206 207 208

# J Birds

by John Fedchock

2nd Trombone

Medium - Up Swing ♩ = 192

SOLO W/TBN.1

7

^

mf

1

8

9

9

10

11

12

13

14

15

16

17

17

18

19

20

21

22

23

24

25

25

26

27

28

29

30

31

32

33

33

34

35

6

41

6

SOLO

BbMA7

G7ALT

CM17

F7ALT

41

47

48

49  $BbMA7$   $G7ALT$   $CM17$   $F7ALT$   $DM17$   $G7ALT$   $CM17$   $F7ALT$

49 50 51 52

$Bb7$   $Eb7$   $E^0$   $Bb7$   $G7ALT$   $CM17$   $F7ALT$

53 54 55 56

57  $Bb$   $G7ALT$   $CM17$   $F7ALT$   $DM17$   $G7ALT$   $CM17$   $F7ALT$

57 58 59 60

$Bb7$   $Bb7ALT$   $EbMA7$   $E^0$   $Bb/F$   $B7ALT$   $Bb7$  (2ND X  $C\#9$ )

61 62 63 64

65  $D7$   $G7$

65 66 67 68

$C7$   $F7$

69 70 71 72

73  $Bb$   $G7ALT$   $CM17$   $F7ALT$   $DM17$   $G7ALT$   $CM17$   $F7ALT$

73 74 75 76

$Bb7$   $Eb7$   $E^0$  1.  $Bb$   $CM17$   $F7$  2.  $F7ALT$   $Bb7$   $Gb7$

77 78 79 80 81 82

83  $F7ALT$   $Gb13(C\#11)$   $F7ALT$   $Eb7SUS$

83 84 85 86

$D7(\#9)$   $Db7(\#9)$   $C7ALT$   $F7ALT$   $Bb7(\#9)$   $Db7$   $F\#7$   $B7$  91  $Bb7$  END SOLO

87 88 89 90 91

7 99 8

92 99

107 115 123 8

107 115 123

131 139 147 8

131 139 147

155 163 4

155 163

SOLO Bb7 Eb7 E° Bb G7 CM17 F7

167 168 169 170

171 179 187 8

171 179 187

OPEN  
TRADE 4'S W/TBN 1  
CM17 F7 DM17 G7

195 196 197 198

ON CUE  
8 X'S  
CM17 F7 DM17 G7

199 200 201 202

203 204 206 207 208 EbMA7(#11)

203 204 206 207 208

# J Birds

by John Fedchock

3rd Trombone

Medium - Up Swing  $\text{♩} = 192$ 

1 2 3 4 5 6 7 8 9 15 16 17 24 25 26 27 28 29 30 32 33 34 35 36 37 38 39 40 41 42 43 44 45 46 47

49

4

2ND X ONLY

49 53 54 55 56

mf

57

4

57 61 62 63 64

mf

65

7

73

4

65 66 73

mf

2ND X ONLY

1.

2.

77 78 79 81 82

mf

83

83 84 85 86

87 88 89 90

mf

91

91 92 93 94

95 96 97 98

99

3

3

99 102 103 106

mf



107

107 108 109 110 114

115

115 121 122 123 124

*mf*

131

131 139 140 141 142

*mf*

143 144 145 146

147

147 148 154 155 156

*mf*

157 158 159 160

161

161 162 163 164

*mf*

165 166 167 168

171

171 172 173 174

3

175 178 179 180

181 182 183 184

185 186 187 188

189 190 191 192

193 194 195 OPEN 4

ON CUE  
8 X'S  
PLAY 3RD-8TH X'S ONLY

199 200 201 202

*mf - f - ff*

203 204 205

*ff*

QUICK

206 207 208

# J Birds

by John Fedchock

4th Trombone

Medium - Up Swing ♩ = 192

1 2 3 4 5 6 7 8 9 15 16 17 24 25 26 27 28 29 30 31 32 33 34 35 36 37 38 39 40 41 42 43 44 45 46 47

179

3

175 178 179 180

Detailed description: This block contains the first line of musical notation for the 4th Trombone part. It covers measures 175 to 180. Measure 175 has a whole rest. Measure 176 has a triplet of eighth notes. Measures 177-180 contain eighth and quarter notes with various accidentals (flats and naturals) and slurs. A box with the number 179 is placed above the staff.

181 182 183 184

Detailed description: This block contains the second line of musical notation, covering measures 181 to 184. It continues the melodic line with eighth and quarter notes, including a flat in measure 183. Measure 182 has a whole rest.

187

185 186 187 188

Detailed description: This block contains the third line of musical notation, covering measures 185 to 188. It features eighth and quarter notes with various accidentals. A box with the number 187 is placed above the staff.

189 190 191 192

Detailed description: This block contains the fourth line of musical notation, covering measures 189 to 192. It continues the melodic line with eighth and quarter notes and various accidentals.

195 OPEN 4

193 194 195

Detailed description: This block contains the fifth line of musical notation, covering measures 193 to 195. Measure 195 is a whole note. After measure 195, there is a double bar line and a repeat sign, followed by a whole rest for four measures. A box with the number 195 is placed above the staff, and the word 'OPEN' is written next to it.

ON CUE  
8 X'S  
PLAY 3RD-8TH X'S ONLY

199

199 200 201 202

*mf - f - ff*

Detailed description: This block contains the sixth line of musical notation, covering measures 199 to 202. It starts with a double bar line and a repeat sign. The notes are eighth and quarter notes with various accidentals. A box with the number 199 is placed above the staff. Below the staff, the dynamic markings *mf - f - ff* are written.

203 QUICK

203 204 205

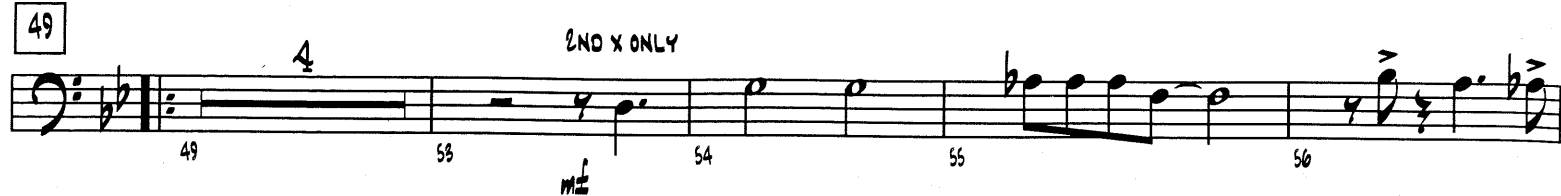
*ff*

Detailed description: This block contains the seventh line of musical notation, covering measures 203 to 205. It features eighth and quarter notes with various accidentals. A box with the number 203 is placed above the staff. Below the staff, the dynamic marking *ff* is written. The word 'QUICK' is written at the end of the line.

206 207 208

Detailed description: This block contains the eighth line of musical notation, covering measures 206 to 208. It continues the melodic line with eighth and quarter notes. Measure 206 has a whole rest.

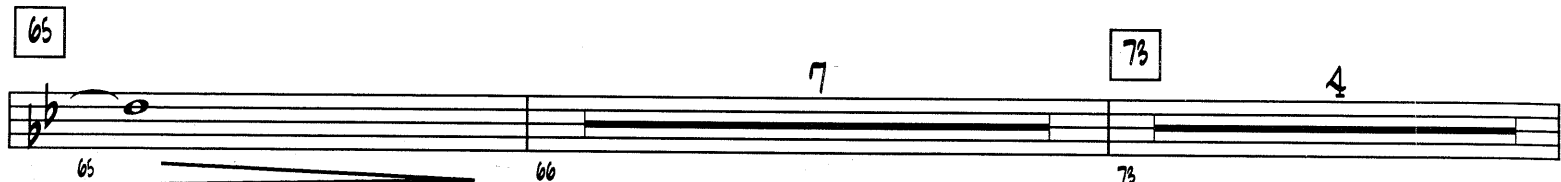
49



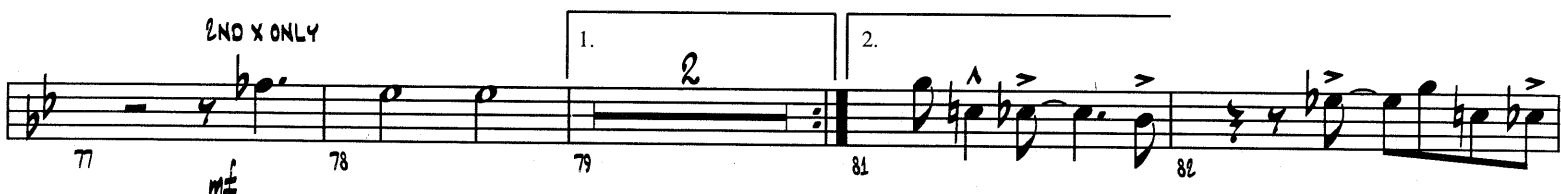
57



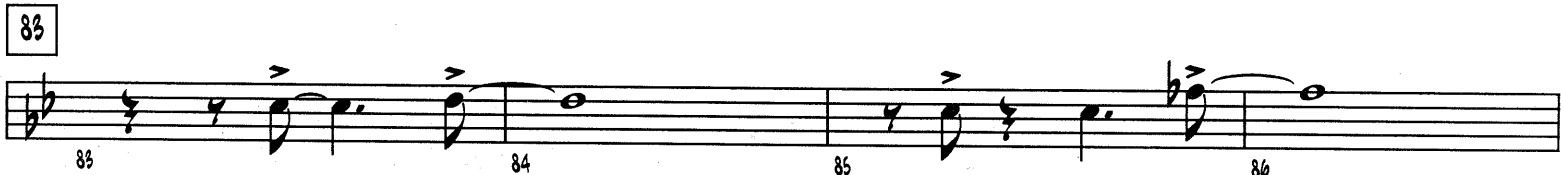
65



2ND X ONLY



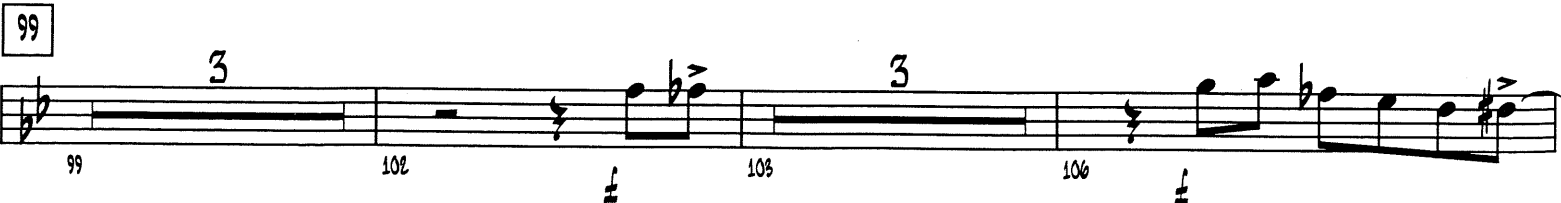
83



91



99



107

107 108 109 110 114

115

115 121 122 123 124

6 7

131

131 139 140 141 142

8

143 144 145 146

147

147 148 154 155 156

6

157 158 159 160

161 162 163 164

163

165 166 167 168

3

171

171 172 173 174